



# SEA SCAN® HDS



## MARINE SONIC TECHNOLOGY



The Sea Scan HDS is the Backbone of the industry in digital Side Scan Sonar. Utilized by Military, Police, and Fire & Rescue Agencies all over the world! It is extremely rugged, and built for the harshest environments...

### KEY FEATURES:

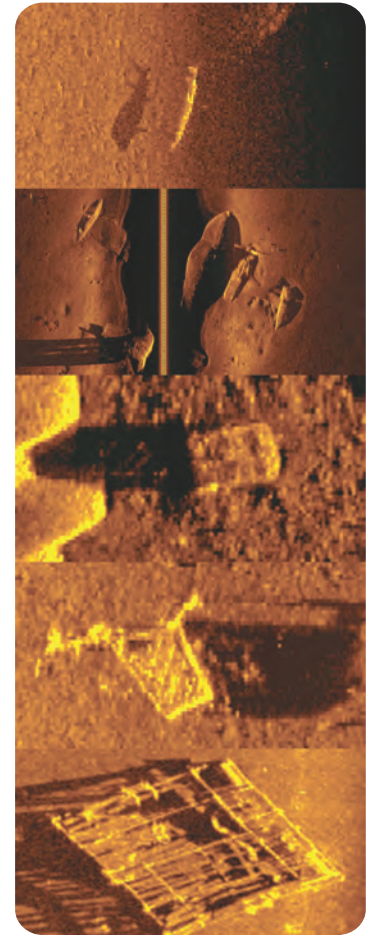
- Fully Digital
- Solid PVC Tow Body
- Enclosed Durable Fin Assembly
- Dual Frequencies, Your Choice  
300/900kHz - 600/1200kHz - 900/1800kHz
- 30m & 100m Kevlar Tow Cables
- Splash-Proof Topside Box
- Splash-Proof GPS
- Tools & Spares Kit
- Rugged Shipping & Storage containers
- 100% Made in the U.S.A

Known as the most trusted side scan system available the Sea Scan HDS is a glutton for abuse. Used by, and made for professionals who need their equipment to work anytime, everytime, in any enviroment, for every mission.

If it's locating lost mines in the old war zones of Cambodia, conducting a recovery in the swamps of North Carolina, or locating lost ships in the great lakes from the 1800's. The HDS won't fail you.

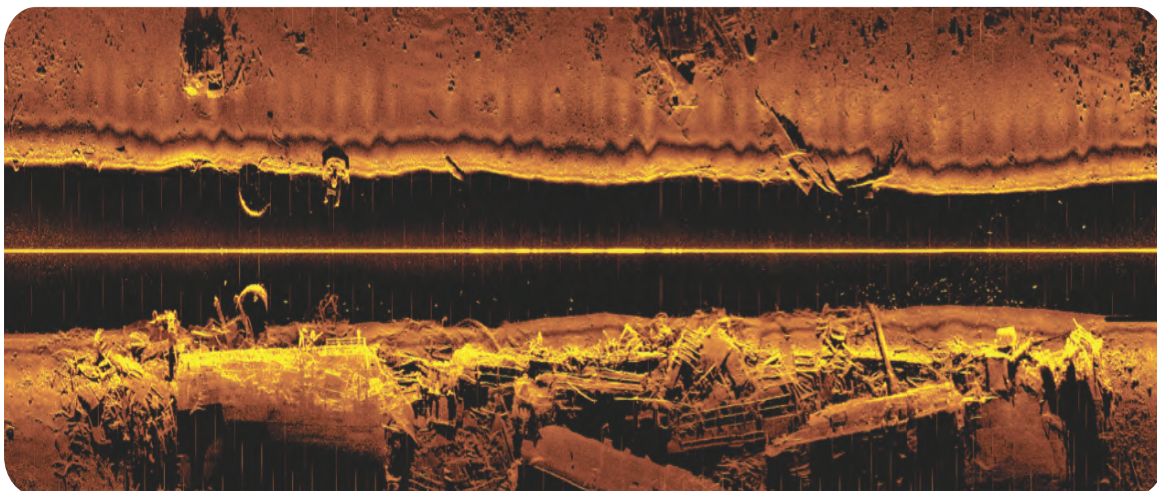
With the optional Magnetometer Integration kit you can seamlessly connect the HDS to your Marine Magnetics SeaSPY Magnetometer for dual operation.

User friendly, Rugged, Field Proven, & Ready when the mission calls. Put your trust in the Sea Scan HDS digital Side Scan Sonar.



### The standard Sea Scan® HDS system includes:

- A solid PVC 300/900, 600/1200 or 900/1800 kHz dual frequency tow fish that provides an excellent combination of long-range search capability and ultra high resolution images for the detection of small objects (additional frequencies available upon request).
- A portable splash-proof Topside Communications Unit (TCU) that connects through USB.
- 30m and 100m Kevlar tow cables (custom lengths also available).
- A tools and spares kit.
- A splash-proof USB GPS unit.
- Rugged splash-proof shipping cases for all components.
- All the software and manuals







# SEA SCAN® HDS



Image courtesy of Teledyne Gavia ehf.  
using Sea Scan HDS 1800kHz @ 10m range



## TOW FISH SPECIFICATIONS

<b>Construction</b>	High Impact Billet PVC
<b>Pulse Type</b>	Tone Burst 20us @ 300 kHz, 10us @ 600 kHz, 6.67us @ 900 kHz, 5us @ 1200 kHz, 4.44us @ 1800 kHz
<b>Frequency</b>	300 kHz, 600kHz, 900kHz, 1200 kHz, 1800 kHz, 300/900 kHz, 600/1200 kHz, 900/1800 kHz
<b>Range (Maximum)</b>	200m @ 300 kHz, 75m @ 600 kHz, 50m @ 900 kHz, 25m @ 1200 kHz, 15m @ 1800 kHz
<b>Horizontal Beam Width</b>	0.4° 300kHz and above (one-way), < 0.6° @ 150 kHz, < 0.3° 300kHz and above (two-way)
<b>Res. Across Track</b>	3cm @ 300 kHz, 1.5cm @ 600 kHz, 1cm @ 900 kHz, 0.75cm @ 1200 kHz, 0.67cm @ 1800 kHz
<b>Res. Along Track (Two-Way) @ End of Near Field</b>	30.5cm @ 150 kHz, 30.5cm @ 300 kHz, 15.24cm @ 600 kHz, 10.16cm @ 900 kHz, 7.62cm @ 1200 kHz, 5.08cm @ 1800 kHz
<b>Size</b>	Length: 42" (106.7 cm) Diameter: 4" (10.16 cm)
<b>Weight</b>	45lbs (20.5 kg)
<b>Depth Rating</b>	300m

## TOPSIDE COMMUNICATION UNIT (TCU)

<b>Power</b>	9-24 VDC < 10 watts
<b>Connections</b>	USB (2.0) to PC, Tow Fish, Power
<b>Size</b>	6.7" L x 4.8" W x 1.84" H

## SEA SCAN SURVEY® SURVEY

<b>Operating System</b>	Windows XP, Vista, 7, and 8 or higher
<b>Sonar Software</b>	Sea Scan Survey, 3rd Party Interface Available
<b>Data Format</b>	SDS, Built in XTF Converter
<b>Navigation Input</b>	USB, RS-232 (NEMA 0183)

## TOW CABLE

<b>Tow Cable</b>	Twisted Pair w/ Kevlar Strength Member
<b>Cable Length</b>	One 100m and One 30m included with the System, Custom Lengths Available Upon Request
<b>Bend Radius</b>	4"
<b>Strength</b>	750 lb. Safe Working Load

## OPTIONS:



- Ruggedized Laptop
- Keel Weight & Line Weights
- Magnetometer Integration Kit
- Cable Reels & Winches
- Additional Cable Lengths

## MARINE SONIC TECHNOLOGY

120 Newsome Drive, Suite H  
Yorktown, VA. 23606  
(804) 693-9602 - 1-800-447-4804  
[MarineSonic.com](http://MarineSonic.com)

 **ATLAS NORTH AMERICA**  
A company of the ATLAS ELEKTRONIK Group